



Honsu Group 2026Q2 Business Update

免責聲明:

本簡報所提供資訊皆以公開資訊觀測站公告為主，本公司所提供之所有資訊僅供參考，不得據以做為買賣本公司或第三人所發行之有價證券或其他金融商品交易使用，或要求本公司負責。



- I、Company
 - II、Performance
 - III、R&D Investment
 - IV、Product Strategy
 - V、Dividend Policy
-



I、Company

II、Performance

III、R&D Investment

IV、Product Strategy

V、Dividend Policy



弘塑科技股份有限公司
Grand Process Technology Corporation

Y1993 Founded
Y2011 IPO (3131)
Employee : 350

□ Main Product:

Wet Process
Equipment (Etch
/PR Strip/ Cleaner) 、
Chemical Deliver
System



添鴻科技股份有限公司
Chemleader Corporation

Y2013 Merged
Y2002 Founded
Employee : 107

□ Main Product:

Wet Process
Chemistry
(Etchant、PR
Stripper、
Plating Additive)



佳霖科技股份有限公司
Challentech International Corporation

Y2019 Merged
Y1987 Founded
Employee : 124

□ Main Product:

Agent Metrology(X-
Ray、CSAM、EPD) 、
Inspection、Wafer
Transfer、Robot、
pump Overhaul



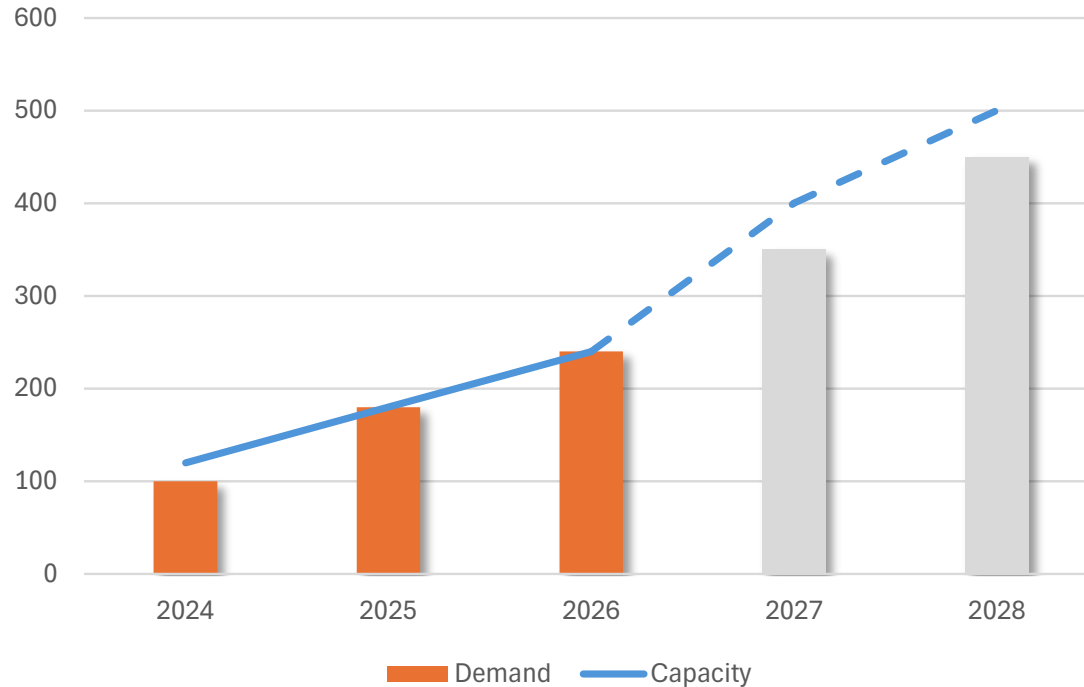
太引資訊系統股份有限公司
TYNE Systems Corporation

Y2018 Merged
Y2002 Founded
Employee : 26

□ Main Product:

Software System
Design(EDA、
SPC、FDC、Big
data) Service

Demand vs. Capacity - GPTC



 ~ 45%
Demand Growth Annually

 ~ 50%
Capacity Increase Annually

Demand incremental : 2.5D AP, 3D AP, PLP, HBM, CPO

GPTC Actions : Expanding Factory, Recruiting Personnel,
Evaluating overseas expansion



I、Company

II、Performance

III、R&D Investment

IV、Product Strategy

V、Dividend Policy

Income Statement(By Quarter)

MNTD							
Quarter / account	1Q25	2Q25	3Q25	4Q25	1Q26	QoQ	YoY
Revenue	1,241	1,630	1,494	2,150	1,596	-25.7%	28.7%
Gross Profit	506	662	608	905	539	-40.4%	6.5%
OP Expense	230	255	291	269	329	22.2%	43.4%
OP Net Profit	277	407	317	636	210	-67.0%	-24.2%
Non-OP Revenue	41	(114)	62	65	370	472.3%	799.4%
Income before Tax	318	293	379	700	580	-17.1%	82.5%
Net Profit	255	205	303	562	461	-17.9%	80.8%
EPS(NTD)	8.74	7.05	10.40	19.29	16.11	-16.5%	84.3%
Gross Margin	40.8%	40.6%	40.7%	42.1%	33.8%	-8.3%	-7.0%
OP Margin	22.3%	25.0%	21.2%	29.6%	13.2%	-16.4%	-9.2%
Margin before Tax	25.6%	18.0%	25.4%	32.6%	36.3%	3.8%	10.7%

Income Statement

MNTD							
Year / account	2020	2021	2022	2023	2,024	2025	YoY
Revenue	2,488	3,658	3,723	3,544	4,073	6,514	59.9%
Gross Profit	1,126	1,563	1,618	1,488	1,845	2,681	45.3%
OP Expense	593	739	859	793	939	1,045	11.2%
OP Net Profit	533	824	759	695	906	1,636	80.6%
Non-OP Revenue	(23)	10	175	54	141	53	-62.1%
Income before Tax	510	835	934	749	1,047	1,690	61.5%
Net Profit	397	670	722	616	846	1,325	56.7%
EPS(NTD)	13.92	23.47	25.32	21.56	29.07	45	56.4%
Gross Margin	45.3%	42.7%	43.5%	42.0%	45.3%	41.2%	-4.1%
OP Margin	21.4%	22.5%	20.4%	19.6%	22.2%	25.1%	2.9%
Margin before Tax	20.5%	22.8%	25.1%	21.1%	25.7%	25.9%	0.2%



I、Company

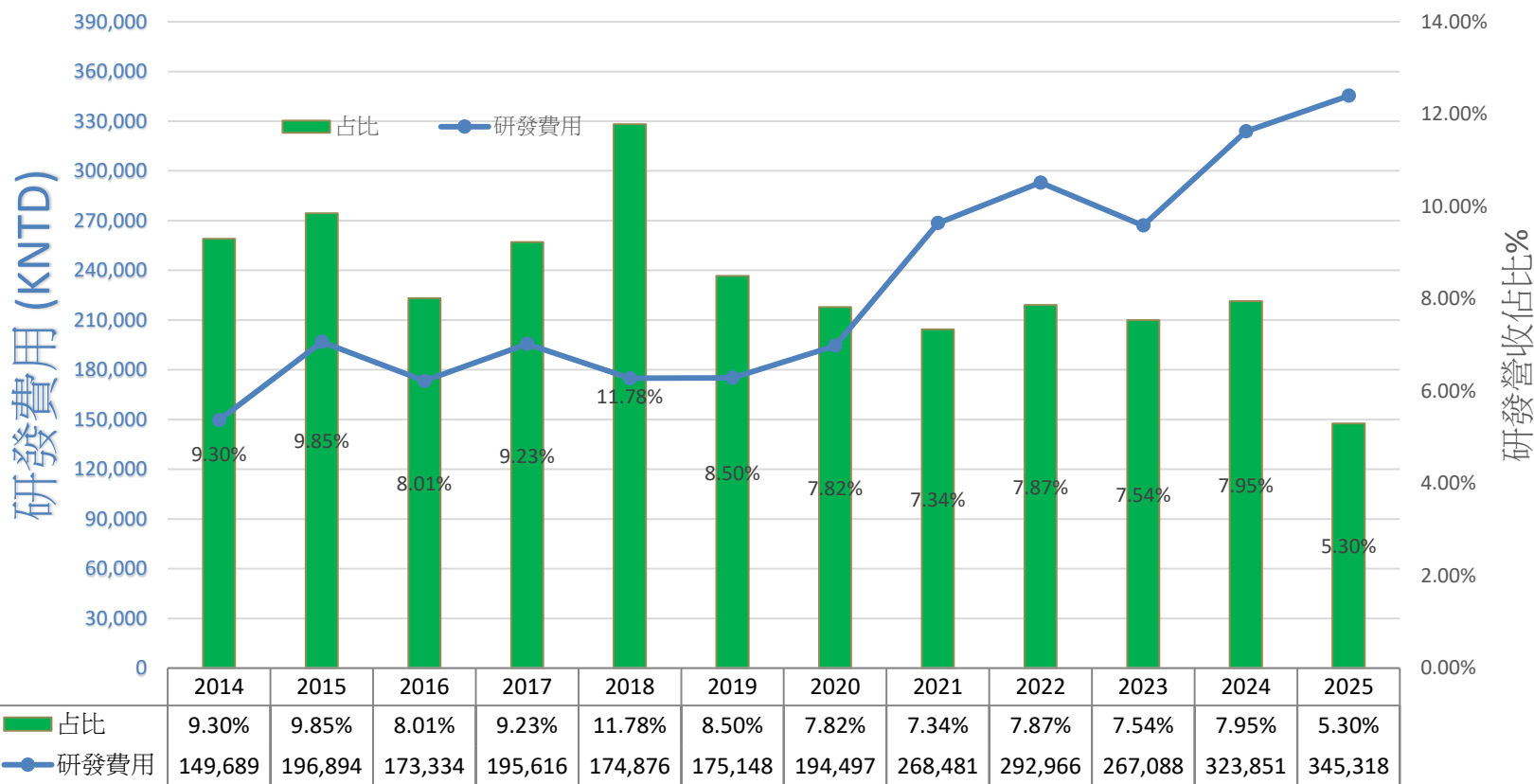
II、Performance

III、R&D Investment

IV、Product Strategy

V、Dividend Policy

弘塑科技研發費用及營收佔比(Group)





I、Company

II、Performance

III、R&D Investment

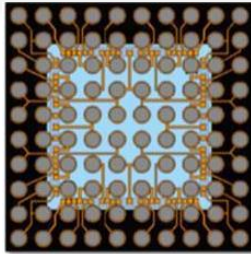
IV、Product Strategy

V、Dividend Policy

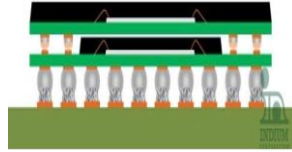
Process Application Opp.



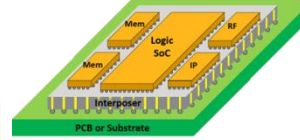
Fan-In /
WL-CSP



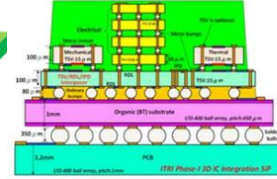
Fan-Out /
WLP/PLP



Package on
package



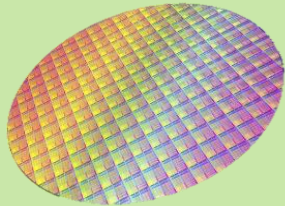
2.5D
Packaging



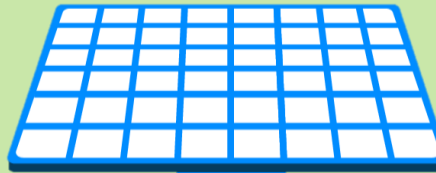
3D
Hybrid Bond

2D to 3D
Structure

Wide Range
Wafer Size



75mm
100mm
125mm
150mm
200mm
300mm



310*310 mm
510*515 mm
600*600 mm

Multi-
Application

Advanced Package

- CuP, FO
- 2.5D CoWoS
- 3D SoIC、CPO
- HBM

Compounded

- SiC
- GaAs/GaN
- InP

Automotive

- Diode
- CIS
- Micro LED

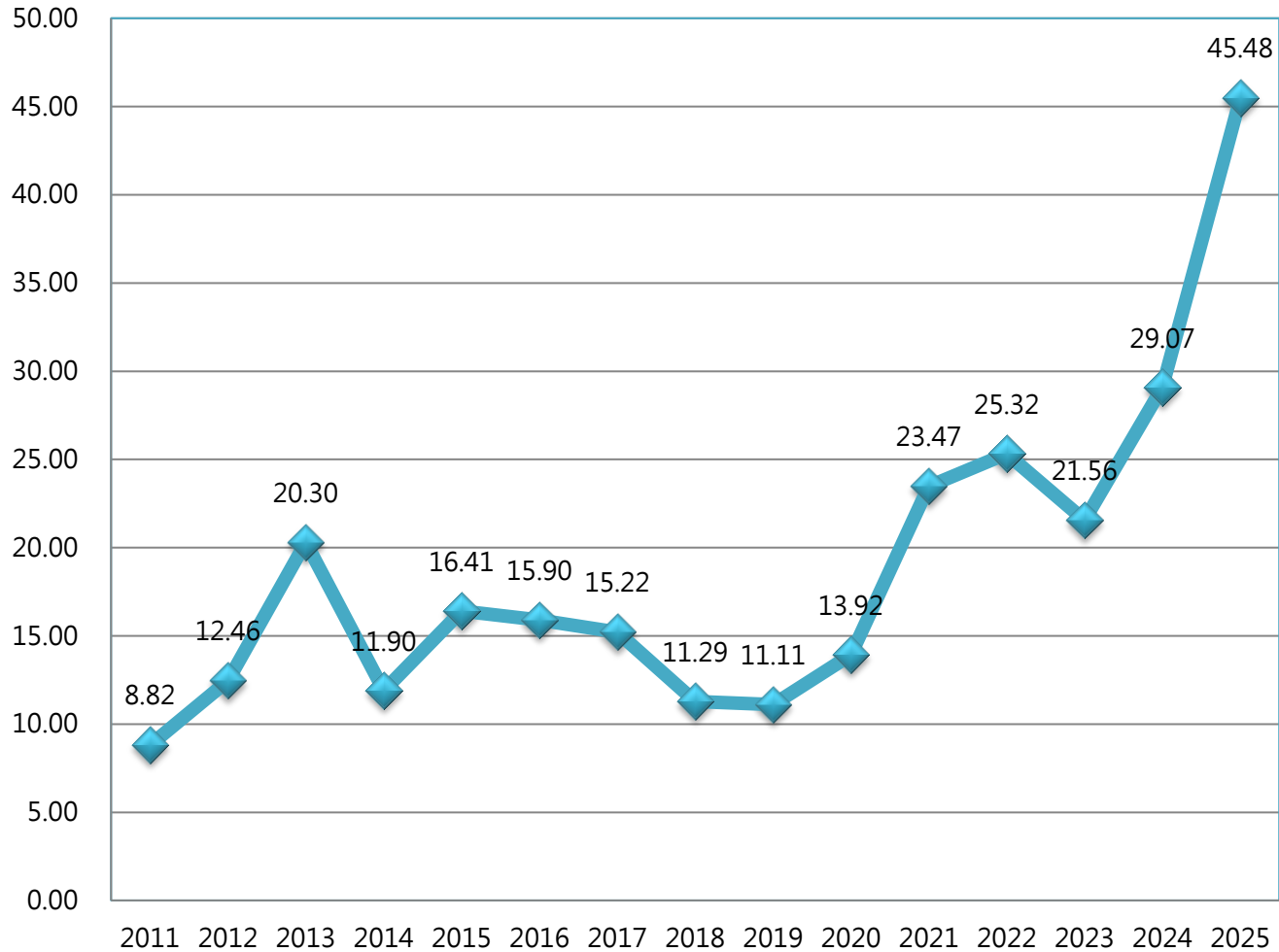
Others

- Bio Chip
- Crystal element
- IC Substrate

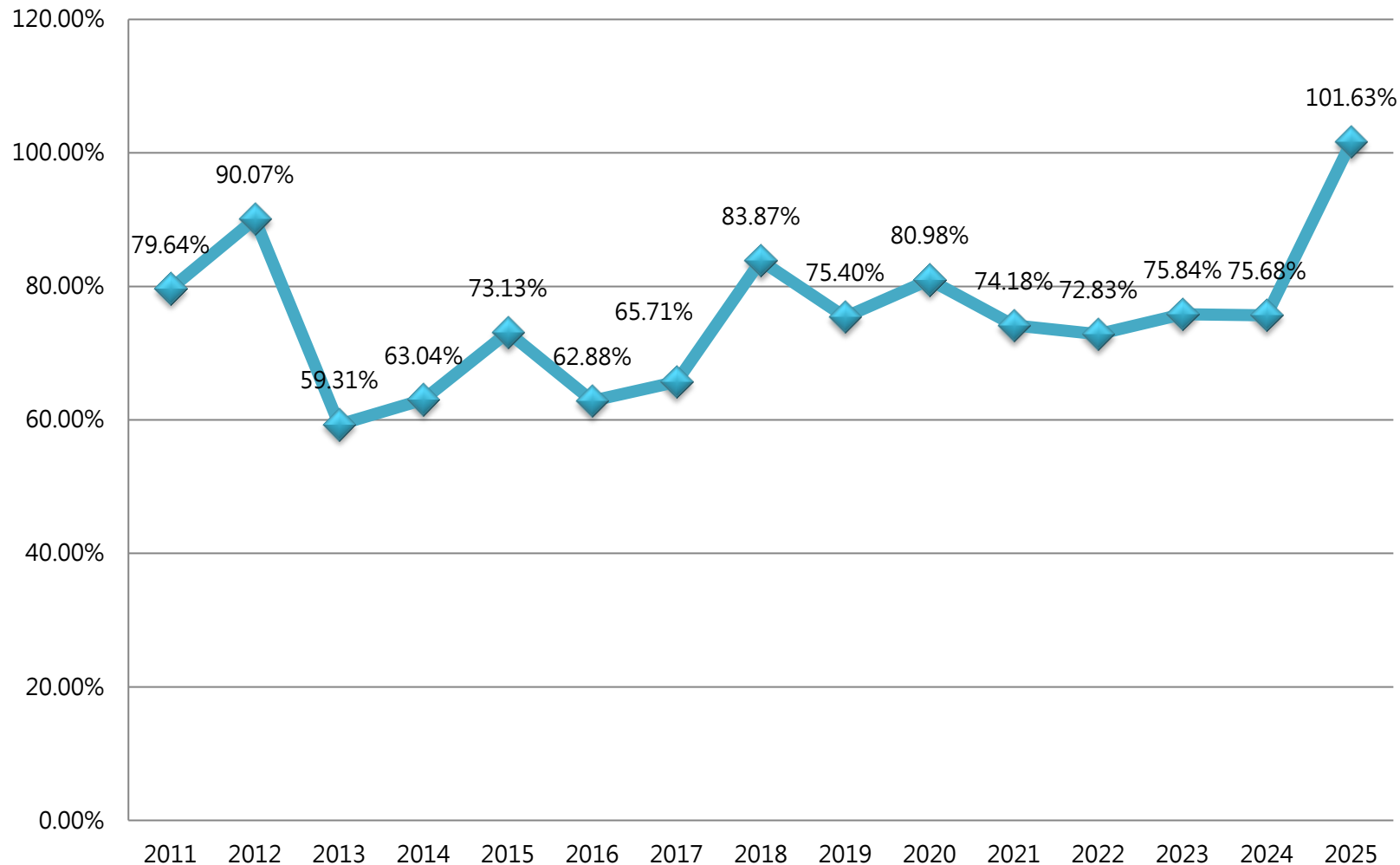


- I、Company
 - II、Performance
 - III、R&D Investment
 - IV、Product Strategy
 - V、Dividend Policy**
-

歷年EPS趨勢



歷年股利配發率趨勢



THANKS

感謝聆聽

